

# KB-8088S

## Conventional USB Keyboard with Smart Card Reader

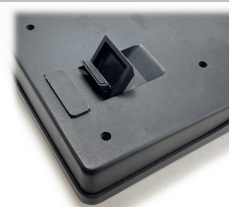


KB-8088S is a cutting-edge IC card reader equipped for smartcard-enabled identification systems. With seamless integration into E-Banking, E-Payment, Transportation, healthcare applications and E-Government applications, KB-8088S ensures unparalleled security.

Compliant with PS/SC and CCID standards, installation is effortless. This keyboard is tailored for easy integration within your PC setup. Compatible with ISO 7816 Class A, AB, and C memory and microprocessor smart cards (T=0, T=1), the KB-8088S guarantees versatile performance.

### KEYBOARD SPECIFICATION

Key Number	104/ 105/ 109 keys (US/ EU/JP)
Key Switch	Membrane with 20 million life cycle time
Key Force	50 +/- 7 gm
Traveling Distance	4 +/- 0.5 mm
Input Power/ Interface	5 VDC, 100mA / USB 1.1 version (smart card reader USB 2.0)
LED Indicators	CapLock, NumLock, Smart Card Reader



### SMART CARD READER SPECIFICATION

Standard	ISO7816 Class A, B and C ( 5V, 3V, 1.8V ), T=0 and T=1
Protocols	T=0, T=1.2=wire; SLE 4432/42 (S=10), 3-wire; SLE441828 (S=9), 12C (S=8)
Read & Write Speed	344 Kbps / up to 4MHz
Card Type Support	5V, 3V and 1.8V smart card ISO 7816 Class A, AB and C
API Support	PCSC, CCID
PC/SC Driver Compliance	Windows 98/ME/2000/XP (32bit), 2003 Server Win, Window NT Windows CE 5.0/ CE.NT, Windows XP 64bit, Windows Vista (32 bit/64 bit), Windows 7, Linux
Reliability	100K card insertions

### OTHERS

Environment	Operating Tem.	0 ~ 50 degrees Celsius (10 ~ 95% RH, 25 degree Celsius)
	Storage Tem.	-10 ~ 65 degree Celsius (5% ~ 90% RH, 25 degree Celsius)
Physical	Dimension	446.0 (L) x 170 (W) x 32 (H) mm ; Box dimension: 470 (L) x 205 (D) x 35 (H) mm
	Weight	0.84 kgs (N.W.); 1.05 kgs (G.W.)



\* Features and specification are subject to change without notice.

